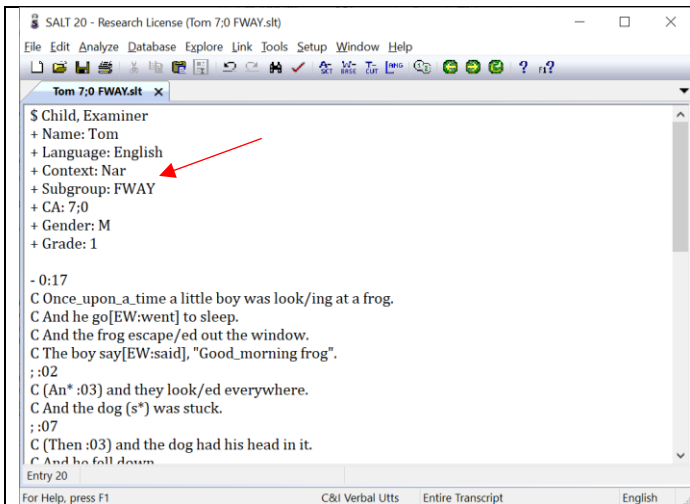
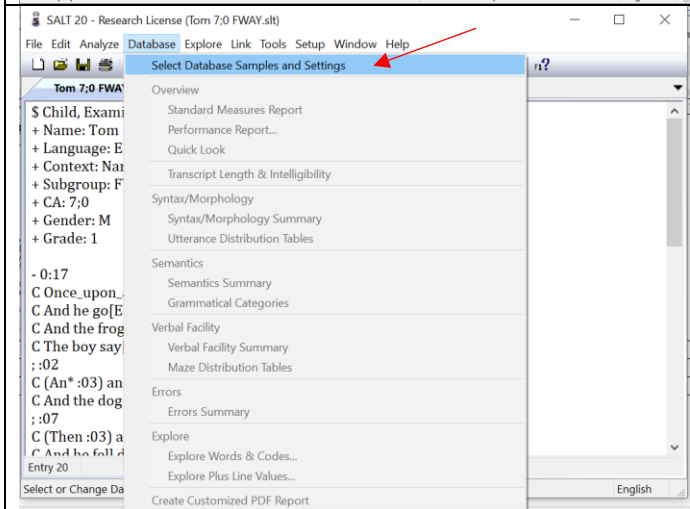


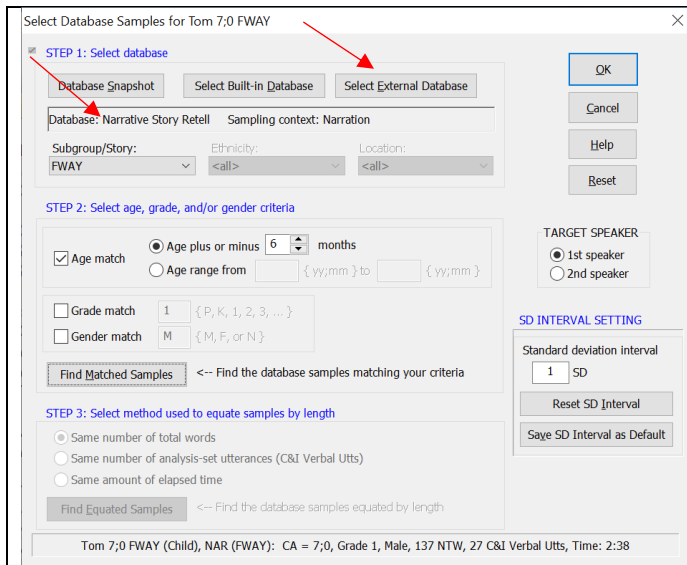
<p><b>How to Add a Reference Database to SALT 20</b></p>	<p>This tutorial shows you how to add a reference database so it can be accessed in SALT. It assumes you are using the current release of SALT 20.</p>
<p><b>Step 1: Locate the database you want to use with SALT.</b></p> <ul style="list-style-type: none"> <li>• Download contributed database <ul style="list-style-type: none"> <li>○ Downloads→Contributed Databases</li> <li>○ filename ends with the extension “.sltdb”</li> <li>○ located in browser’s download folder</li> </ul> </li> <li>• Build your own database <ul style="list-style-type: none"> <li>○ filename ends with the extension “.sltdb”</li> <li>○ may be found in SALT’s default folder for external databases</li> </ul> </li> </ul> <p><b>Step 2: Move the database to SALT’s folder for external databases.</b></p> <p>Default folder for external databases (created automatically when you first run SALT):</p> <p><b>Documents\My SALT Data\External Reference Databases</b></p>	<p>The first step is to locate the database you want to use with SALT. This may be one of the contributed databases downloaded from the SALT website, or one you built from your own transcripts.</p> <p>Contributed databases may be downloaded from the SALT website by selecting “Downloads→Contributed Databases”. The database file you download ends with the extension “.sltdb”. Locate this file in your browser’s download folder.</p> <p>Your own database, which is built using the Research version of SALT, also ends with the file extension “.sltdb”. This file may be located anywhere on your computer or network. If you built the database on your computer, you may find the file in SALT’s default folder for external databases. This folder, which was created when you ran SALT for the first time, is found at “Documents\My SALT Data\External Reference Databases”. It may be the case, however, that the database was built and stored somewhere else.</p> <p>The second step is to move the database file to SALT’s default folder for external databases. Unless you changed this location in the Setup menu, it is located in the folder “My SALT Data\External Reference Databases” within your Documents folder.</p>
<p><b>Step 3: Test the database.</b></p> <p>Demo database</p> <ul style="list-style-type: none"> <li>• Story-retell narratives based on 2 stories <ul style="list-style-type: none"> <li>○ FWAY: Frog, Where Are You?</li> <li>○ BUS: The Bus Story</li> </ul> </li> </ul>	<p>The next step is to test the database. This demo assumes the database is named “Demo.sltdb” and contains story-retell narratives based on two stories: “Frog, Where Are You?” and “The Bus Story”.</p>



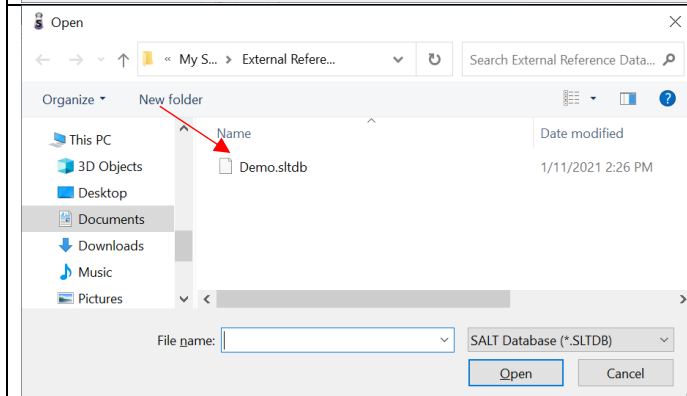
To test the database, I'll open a transcript from Tom retelling Frog, Where Are You?. Notice the context is Nar and the subgroup is FWAY.



I'll go to the Database menu and "Select Database Samples and Settings".



Notice the Narrative Story Retell database is preselected. To change this to the Demo database, just click “Select External Database” ....



... and select the Demo database

Select Database Samples for Tom 7;0 FWAY

STEP 1: Select database

Database Snapshot    Select Built-in Database    Select External Database

Database: Demo    Sampling context: Narration

Subgroup/Story: FWAY    Ethnicity: <all>    Location: <all>

Bus  
FWAY

STEP 2: Select age, grade, and/or gender criteria

Age match     Age plus or minus 6 months  
 Age range from {yy:mm} to {yy:mm}

Grade match 1 {P, K, 1, 2, 3, ...}

Gender match M {M, F, or N}

Find Matched Samples    << Find the database samples matching your criteria

STEP 3: Select method used to equate samples by length

Same number of total words  
 Same number of analysis-set utterances (C&I Verbal Utts)  
 Same amount of elapsed time

Find Equated Samples    << Find the database samples equated by length

Tom 7;0 FWAY (Child), NAR (FWAY): CA = 7;0, Grade 1, Male, 137 NTW, 27 C&I Verbal Utts, Time: 2:38

Now I'm using the Demo database. Notice the subgroup is preselected as FWAY because Tom's transcript specifies the subgroup as FWAY. But if I click the dropdown arrow, you can see that this database also contains the Bus story.

Select Database Samples for Tom 7;0 FWAY

STEP 1: Select database

Database Snapshot    Select Built-in Database    Select External Database

Database: Demo    Sampling context: Narration

Subgroup/Story: FWAY    Ethnicity: <all>    Location: <all>

STEP 2: Select age, grade, and/or gender criteria

Age match     Age plus or minus 6 months  
 Age range from {yy:mm} to {yy:mm}

Grade match 1 {P, K, 1, 2, 3, ...}

Gender match M {M, F, or N}

Find Matched Samples    15 samples matched age criteria

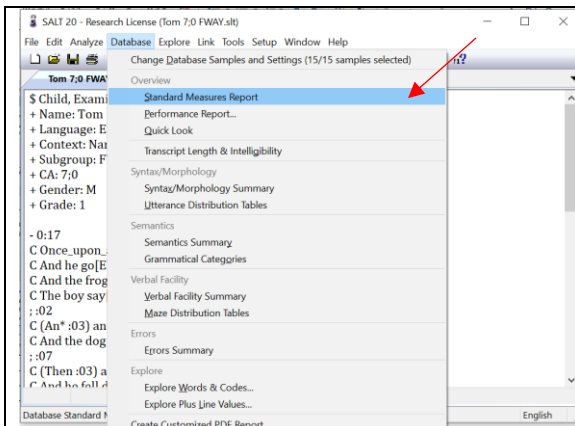
STEP 3: Select method used to equate samples by length

Same number of total words  
 Same number of analysis-set utterances (C&I Verbal Utts)  
 Same amount of elapsed time

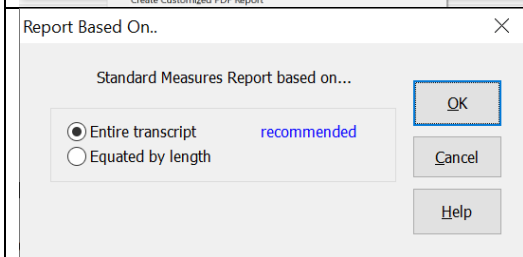
Find Equated Samples    15 samples contain at least 137 total words

Tom 7;0 FWAY (Child), NAR (FWAY): CA = 7;0, Grade 1, Male, 137 NTW, 27 C&I Verbal Utts, Time: 2:38

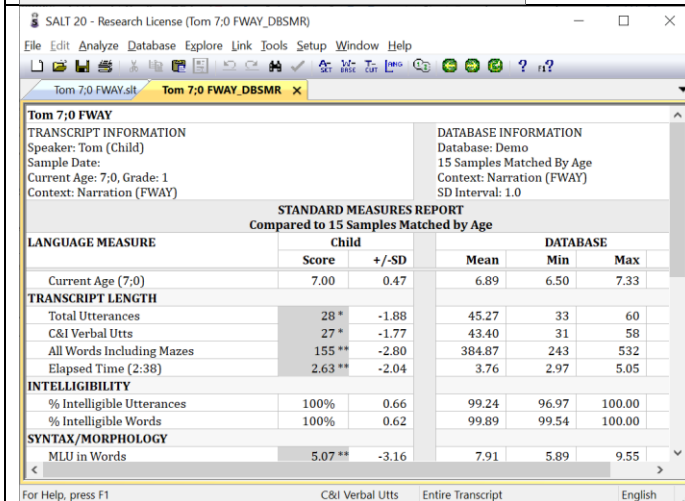
Keeping the subgroup as FWAY, I find the matched samples...  
 and the equated samples ...  
 and click OK.



Now I'll select "Standard Measures Report" from the Database menu...



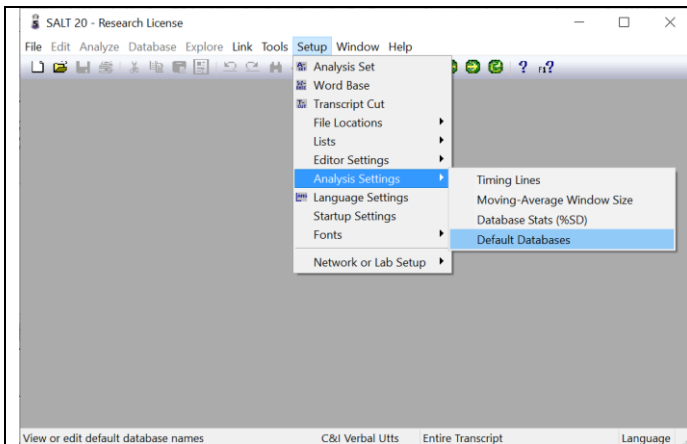
... based on the entire transcript.



And the Standard Measures Report is displayed comparing Tom's transcript to transcripts selected from the Demo database.

#### Step 4: Edit the default databases setting.

There's one final step which may make it easier to use this database. Remember when I compared Tom's transcript, SALT preselected the Narrative Story Retell database and I had to change it to the Demo database? SALT preselects the "best" database by looking at the contents of the plus lines and applying some rules. If I want the Demo database to be preselected, I need to change the rules.



Select “Setup → Analysis Settings → Default Databases”.

Default Reference Databases

Order	Language	Bilingual	Context	Subgroup	Default Database
1	English		Con		Conversation (B)
2	English		Con	Play	Play (B)
3	English		Nar	SSS	Narrative SSS (B)
4	English		Nar	FWAY,APNF,PGHW,DDS	Narrative Story Retell (B)
5	English		Nar	ENNI	ENNI (B)
6	English		Nar	TNL2	TNL2 Narrative Samples (B)
7	English		Nar	TNL	TNL Narrative Samples (B)
8	English		Nar	AGL,BUS	NZ-AU Story Retell (B)
9	English		Nar	NZPN	NZ-AU Personal Narrative (B)
10	English		Expo		Expository (B)
11	English		Pers		Persuasion (B)
12	Spanish	SE	Nar	FWAY,FGTD,FOHO	Bilingual Spanish Story Retell (B)
13	Spanish	SE	Nar	OFTM	Bilingual Spanish Unique Story (B)
14	English	SE	Nar	FWAY,FGTD,FOHO	Bilingual English Story Retell (B)
15	English	SE	Nar	OFTM	Bilingual English Unique Story (B)
16	Spanish		Nar	FWAY,FGTD,FOHO,OFTM	Monolingual Spanish Story Retell (B)

Buttons: OK, Cancel, Help, Reset, Delete Default Database, Sort, Save as Default

This dialogue box defines the rules for preselecting databases for comparison. The rules are based on language, context, and subgroup. If I want my new database to be preselected, I need to **carefully** add it to the list.

Default Reference Databases

Order	Language	Bilingual	Context	Subgroup	Default Database	Browse Built-in (B)	Browse External (E)
1	English		Con		Conversation (B)		
2	English		Con	Play	Play (B)		
3	English		Nar	SSS	Narrative SSS (B)		
4	English		Nar	FWAY,APNF,PGHW,DDS	Narrative Story Retell (B)		
5	English		Nar	ENNI	ENNI (B)		
6	English		Nar	TNL2	TNL2 Narrative Samples (B)		
7	English		Nar	TNL	TNL Narrative Samples (B)		
8	English		Nar	AGL,BUS	NZ-AU Story Retell (B)		
9	English		Nar	NZPN	NZ-AU Personal Narrative (B)		
10	English		Expo		Expository (B)		
11	English		Pers		Persuasion (B)		
12	Spanish	SE	Nar	FWAY,FGTD,FOHO	Bilingual Spanish Story Retell (B)		
13	Spanish	SE	Nar	OFTM	Bilingual Spanish Unique Story (B)		
14	English	SE	Nar	FWAY,FGTD,FOHO	Bilingual English Story Retell (B)		
15	English	SE	Nar	OFTM	Bilingual English Unique Story (B)		
16	Spanish		Nar	FWAY,FGTD,FOHO,OFTM	Monolingual Spanish Story Retell (B)		
17	English		Nar	BUS,FWAY	Demo (E)		

Buttons: OK, Cancel, Help, Reset, Delete Default Database, Sort, Save as Default

I'll start by adding it to the end as line 17. The Language is "English", the Context is "Nar", and the Subgroup is "BUS" and "FWAY". I'll click "Browse External (E)" since this is an external database and select the Demo database.

Notice line 4. This is the rule for the Narrative Story Retell database is very similar: English language, Nar context, and a subgroup which includes FWAY. Also notice line 8 which is the rule for the NZ-AU Story Retell database. This is also very similar: English language, Nar context, and a subgroup which contains BUS.

When lines contain the same information, they are processed in order from 1 to the end. So I need to decide if I want my database to take precedence over one or both of the other databases. In this case, I want my database to have the highest priority so it needs to come before the Narrative Story Retell database on line 4.

Default Reference Databases

Order	Language	Bilingual	Context	Subgroup	Default Database	Browse Built-in (B)	Browse External (E)
1	English		Con		Conversation (B)		
2	English		Con	Play	Play (B)		
3	English		Nar	SSS	Narrative SSS (B)		
5	English		Nar	FWAY,APNF,PGHW,DDS	Narrative Story Retell (B)		
6	English		Nar	ENNI	ENNI (B)		
7	English		Nar	TNL2	TNL2 Narrative Samples (B)		
8	English		Nar	TNL	TNL Narrative Samples (B)		
9	English		Nar	AGL,BUS	NZ-AU Story Retell (B)		
10	English		Nar	NZPN	NZ-AU Personal Narrative (B)		
11	English		Expo		Expository (B)		
12	English		Pers		Persuasion (B)		
13	Spanish	SE	Nar	FWAY,FGTD,FOHO	Bilingual Spanish Story Retell (B)		
14	Spanish	SE	Nar	OFTM	Bilingual Spanish Unique Story (B)		
15	English	SE	Nar	FWAY,FGTD,FOHO	Bilingual English Story Retell (B)		
16	English	SE	Nar	OFTM	Bilingual English Unique Story (B)		
17	Spanish		Nar	FWAY,FGTD,FOHO,OFTM	Monolingual Spanish Story Retell (B)		
4	English		Nar	BUS,FWAY	Demo (E)		

Buttons: OK, Cancel, Help, Reset, Delete Default Database, Sort, Save as Default

So I'm going to renumber lines 4 – 16 to 5 – 17 and change the number of my database from 17 to 4.

Then I'll click the "Sort" button to arrange the databases in order.

Default Reference Databases

Order	Language	Bilingual	Context	Subgroup	Default Database
1	English		Con		Conversation (B)
2	English		Con	Play	Play (B)
3	English		Nar	SSS	Narrative SSS (B)
4	English		Nar	BUS,FWAY	Demo (E)
5	English		Nar	FWAY,APNF,PGHW,DDS	Narrative Story Retell (B)
6	English		Nar	ENNI	ENNI (B)
7	English		Nar	TNL2	TNL2 Narrative Samples (B)
8	English		Nar	TNL	TNL Narrative Samples (B)
9	English		Nar	AGL,BUS	NZ-AU Story Retell (B)
10	English		Nar	NZPN	NZ-AU Personal Narrative (B)
11	English		Expo		Expository (B)
12	English		Pers		Persuasion (B)
13	Spanish	SE	Nar	FWAY,FGTD,FOHO	Bilingual Spanish Story Retell (B)
14	Spanish	SE	Nar	OFTM	Bilingual Spanish Unique Story (B)
15	English	SE	Nar	FWAY,FGTD,FOHO	Bilingual English Story Retell (B)
16	English	SE	Nar	OFTM	Bilingual English Unique Story (B)
17	Spanish		Nar	FWAY,FGTD,FOHO,OFTM	Monolingual Spanish Story Retell (B)

Buttons: Browse Built-in (B), Browse External (E), OK, Cancel, Help, Reset, Delete Default Database, Sort, Save as Default

Now, if a user compares a narrative transcript to database transcripts and the transcript subgroup is BUS or FWAY, the Demo database will be preselected.

If this is what I want, I would click “Save as Default”.

Then, if a narrative transcript contains the Bus or FWAY subgroup, the Demo database will be preselected.

Since this is just a demo database, I don’t want to save it as the default, so I’ll just click OK.



This concludes the tutorial on how to add a reference database so it can be accessed in SALT.